

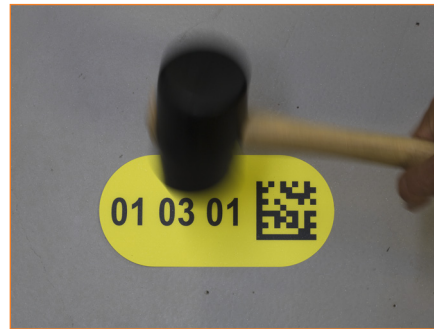
Are you planning on installing the Economy floor labels yourself? Our label experts offer some useful application instructions and tips to ensure long-term use of your floor labels.

Instructions

1. Always make sure to apply the labels to a clean, dry surface that is free of grease and oils, and remove any traces of material to enable the adhesive to firmly attach itself to the surface.
2. Remove the liner and attach the label to the floor.
3. Use a rubber mallet to spread the adhesive well across both the surface and the label material, ensuring strong adhesion.
4. Do not use the Economy labels in areas with heavy traffic from forklifts or pallet trucks. This particular label isn't designed to withstand that type of warehouse traffic.



Degrease the surface



Attach label with rubber mallet

Additional tips

- Minimum application temperature of the label material is +10°C.
- Make sure newly painted surfaces have had proper time to dry to prevent lingering fumes and gases from lifting the labels off the surface.
- Material testing is very important to ensure you choose the type of floor identification that best suits your work environment. Contact our label advisors to request sample material.
- The durability of the labels is dependent upon the type of floor, the condition of the floor, the amount of warehouse traffic, and proper label application. Therefore, we can't guarantee long-term adhesion.
- Please note, the Economy label doesn't adhere well to tarmac or other rough and uneven surfaces. For those types of surfaces, our metal floor frames provide a better and long-lasting solution.